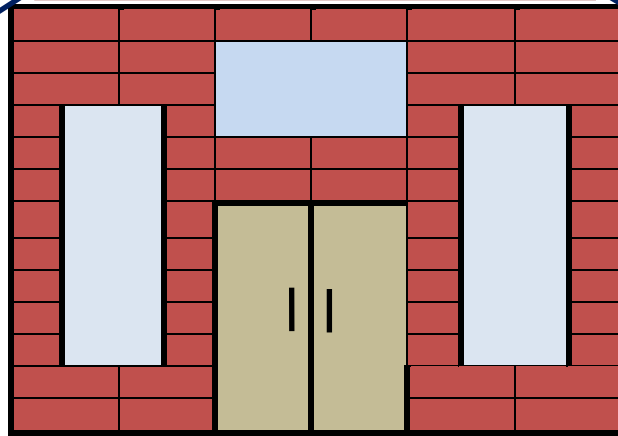


**We have passed our goal of \$393,938
and have raised \$414,776!
Thank You, Donors!!**

Our Lady of the Pacific Catholic Church



**Our goal was
\$393,938.
We passed it by
\$20,838!!**

**The additional funds
can help us cover
inflationary costs and
unforeseen expenses.
THANK YOU!!!**

If you wish to commemorate a loved one or a group, you can purchase a plaque that will be placed by one of the stained glass windows. Contact the mission office for further information. The windows are listed below.

- Rose window over altar: Our Lady of the Pacific (30 sq. ft.)
- Main sanctuary wall: Last Supper (47 sq. ft.)
- Main sanctuary wall: Sermon on the Mount (47 sq. ft.)
- Transept: Pentecost with St. Mary (150 sq. ft.)
- Transept: Holy Family with St. Joseph (150 sq. ft.)
- Midsize nave window: Sts. Cyril & Methodius (47 sq. ft.)
- Midsize nave window: St. Theresa of Lisieux (47 sq. ft.)
- Choir window: St. Nicholas (20 sq. ft.)
- Choir window: St. Cecilia (20 sq. ft.)
- Main façade: Baptism of Jesus (20 sq. ft.)
- Main façade: Nativity (20 sq. ft.)
- Main façade: Resurrection (83 sq. ft.)
- Main façade: St. John Paul II (20 sq. ft.)
- Main façade: Jesus welcomes the little children (20 sq. ft.)
- Above the main entrance: Our Lady of the Pacific (20 sq. ft.)